

# Main St from Cedar Ravine Rd to Locust Ave



**Emphasis Areas**



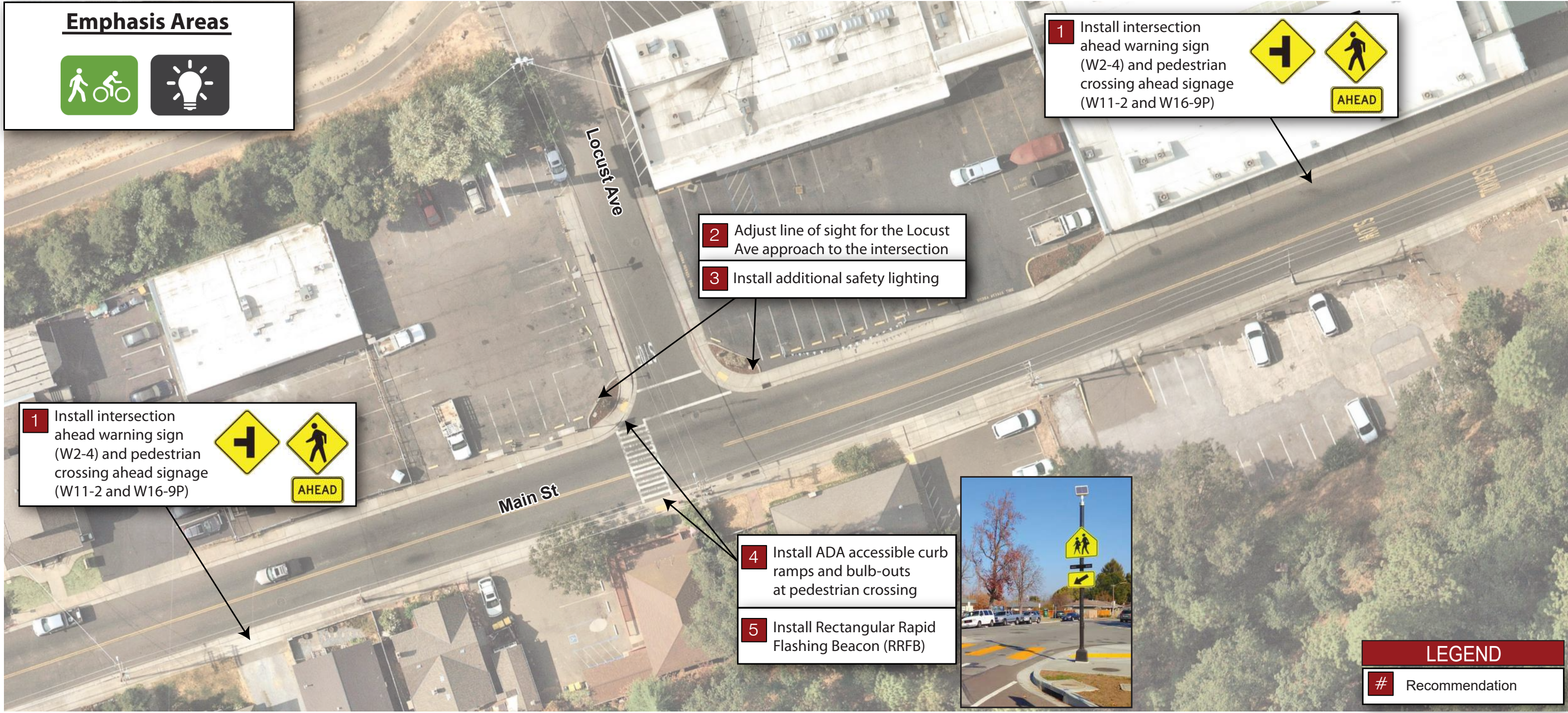


# Main St and Locust Ave



NOT TO SCALE

## Emphasis Areas



1 Install intersection ahead warning sign (W2-4) and pedestrian crossing ahead signage (W11-2 and W16-9P)



1 Install intersection ahead warning sign (W2-4) and pedestrian crossing ahead signage (W11-2 and W16-9P)



2 Adjust line of sight for the Locust Ave approach to the intersection  
3 Install additional safety lighting

4 Install ADA accessible curb ramps and bulb-outs at pedestrian crossing  
5 Install Rectangular Rapid Flashing Beacon (RRFB)



**LEGEND**  
# Recommendation



# Main St and Sacramento St



NOT TO SCALE

## Emphasis Areas



**LEGEND**

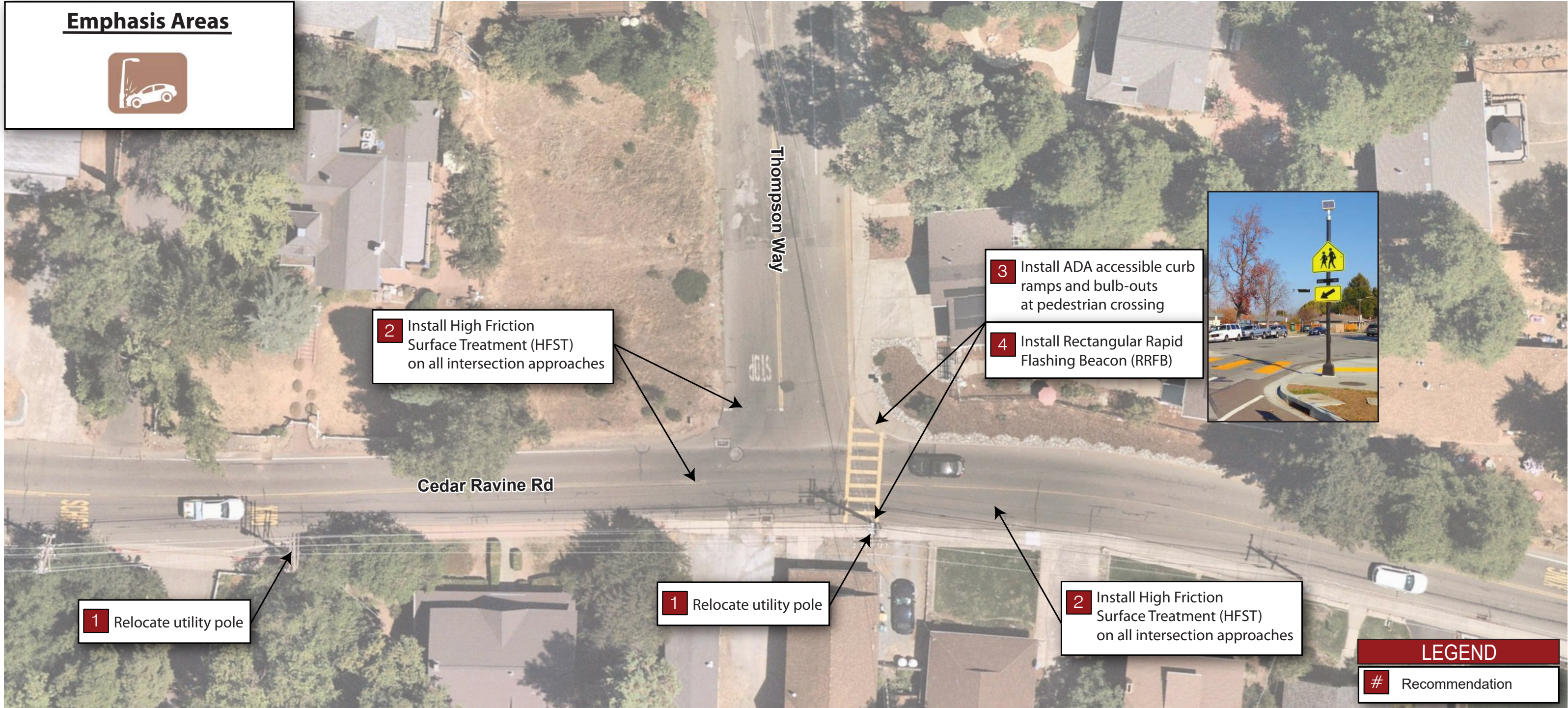
# Recommendation



# Cedar Ravine Rd and Thompson Way



## Emphasis Areas



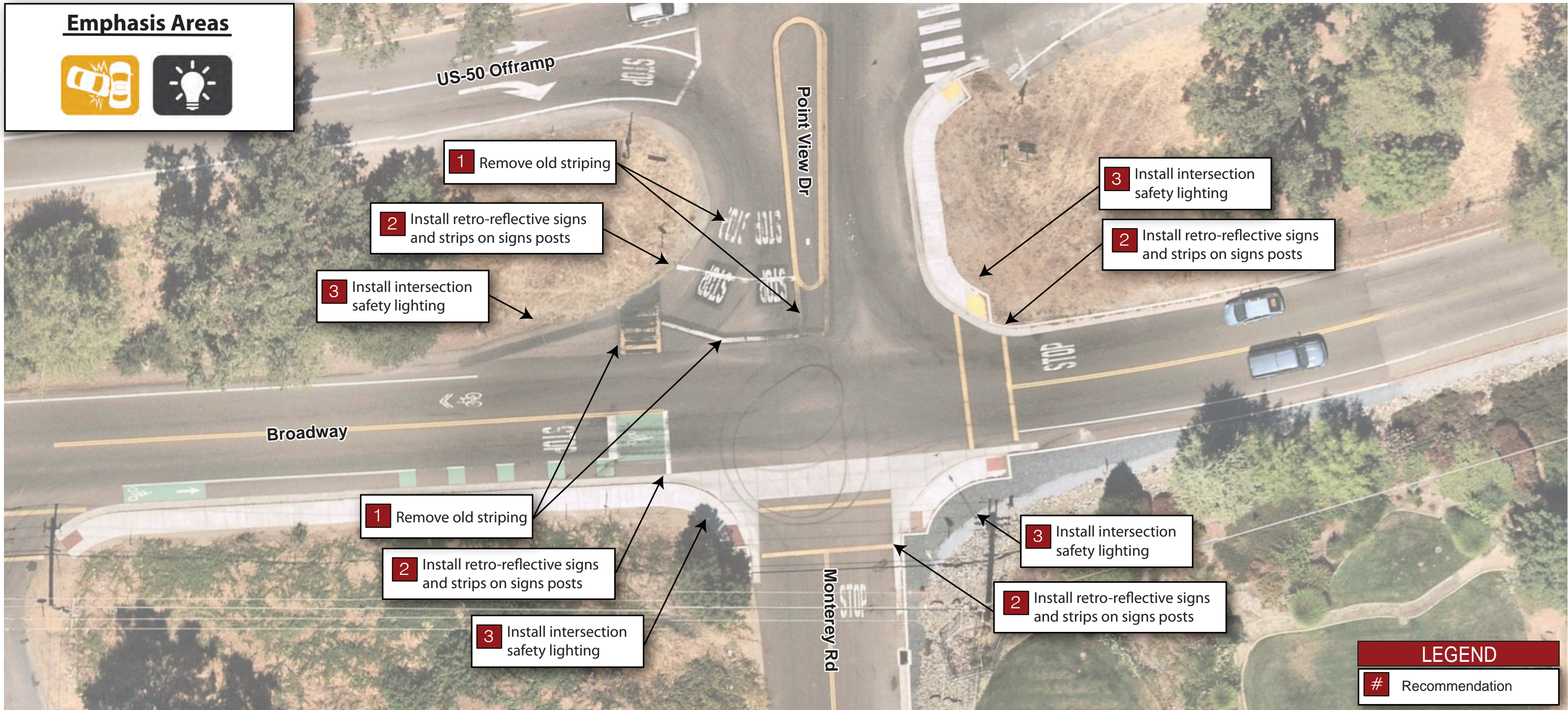


# Broadway and Monterey Rd/Point View Dr



NOT TO SCALE

## Emphasis Areas





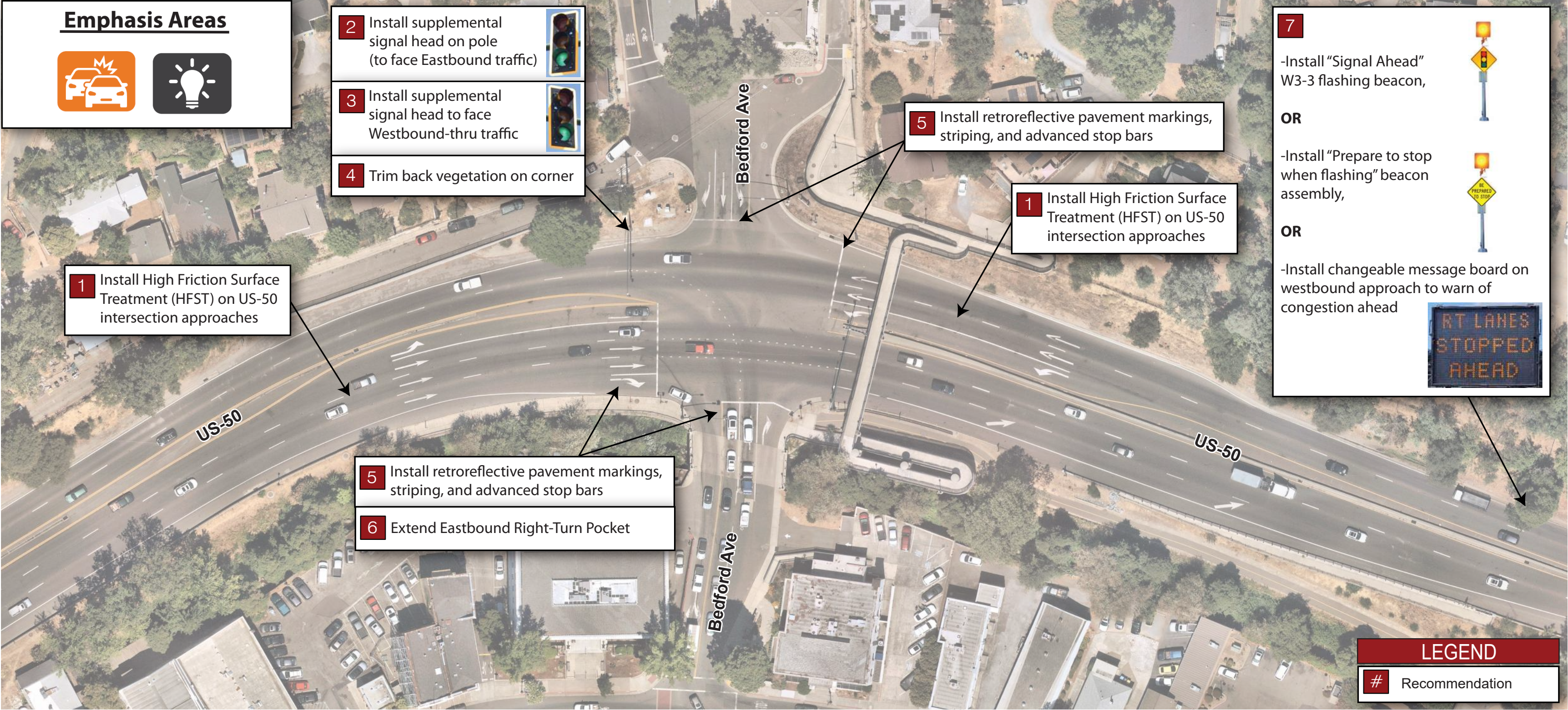




# US-50 and Bedford Ave



NOT TO SCALE

**Emphasis Areas**

- 2** Install supplemental signal head on pole (to face Eastbound traffic) 
- 3** Install supplemental signal head to face Westbound-thru traffic 
- 4** Trim back vegetation on corner




**1** Install High Friction Surface Treatment (HFST) on US-50 intersection approaches

- 5** Install retroreflective pavement markings, striping, and advanced stop bars
- 6** Extend Eastbound Right-Turn Pocket

**5** Install retroreflective pavement markings, striping, and advanced stop bars

**1** Install High Friction Surface Treatment (HFST) on US-50 intersection approaches

**7**

- Install "Signal Ahead" W3-3 flashing beacon, 
- OR**
- Install "Prepare to stop when flashing" beacon assembly, 
- OR**
- Install changeable message board on westbound approach to warn of congestion ahead 

**LEGEND**

# Recommendation



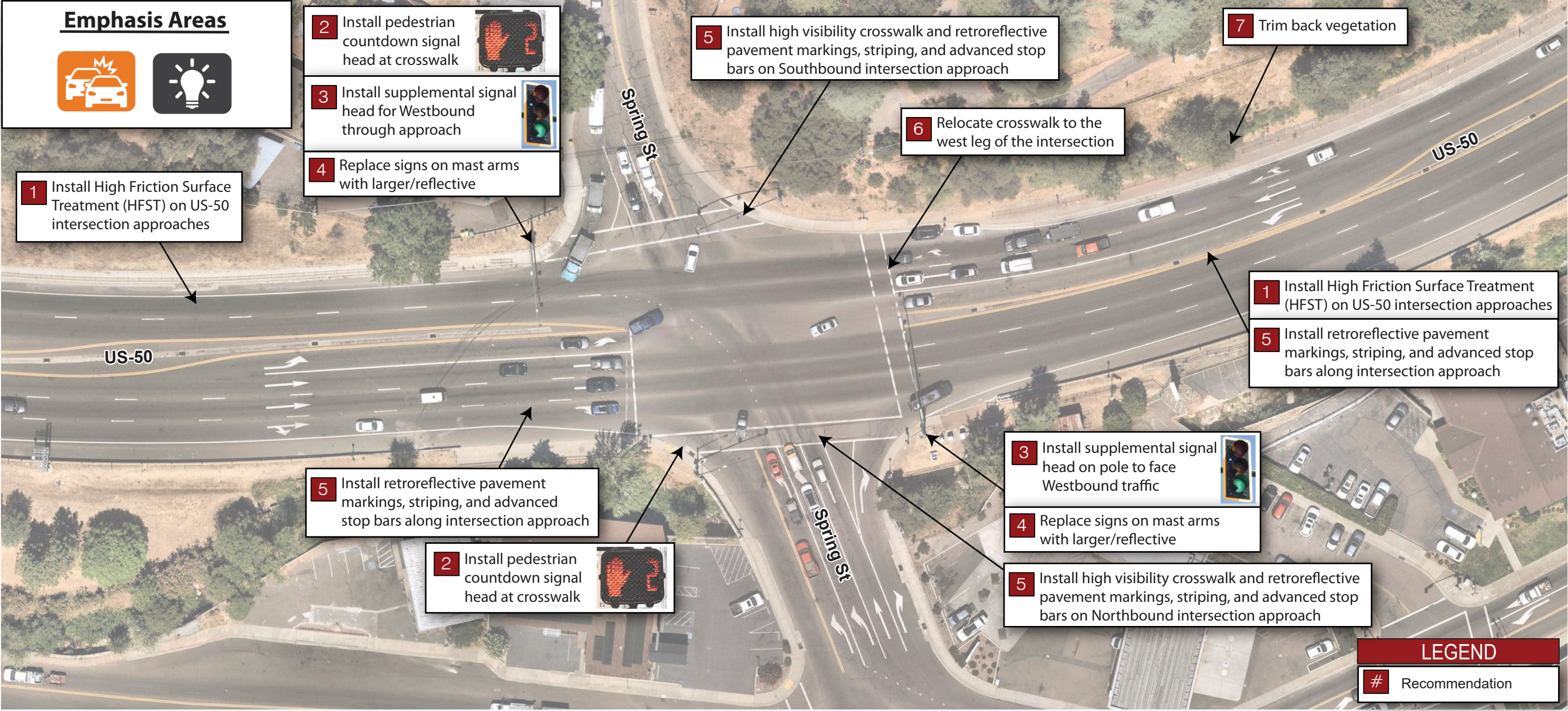




NOT TO SCALE

# US-50 and Spring St

**Emphasis Areas**

**LEGEND**

# Recommendation

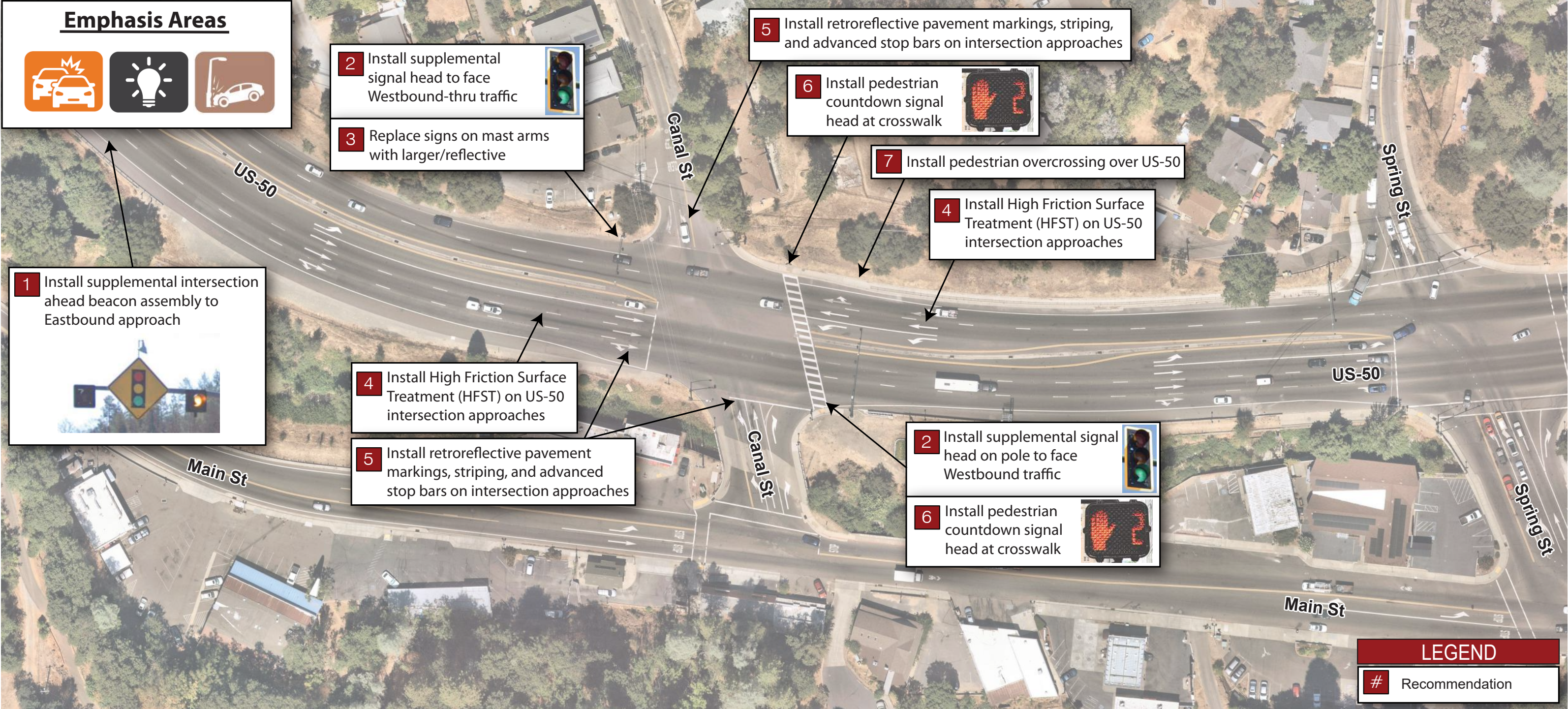




NOT TO SCALE

# US-50 and Canal St

**Emphasis Areas**



**LEGEND**

# Recommendation